

ENGINE CONTROL SYSTEMS DUAL FUNCTION ENGINE CONTROLS

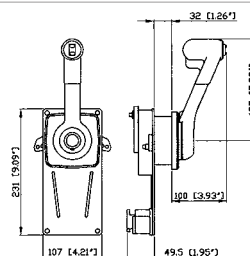
B183 Single-Lever Control

Double action wall mount single lever control for throttle and shift control for inboard, outboard and stern drive engines.

Uses C2 / C8 / C33 / MACHZero control cables.
C5 cable can be connected with K35 kit (4620035).

With optional safety switch X12 (4620112) engine can be started only with disengaged gearbox.

Cod.	Ref	UM	€
4601201	B183	PCS	

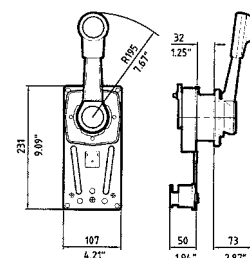


Sail B85 Single-Lever Control

Double action wall mount single lever control for throttle and shift control for inboard engines. Perfect for sail boats thanks to the smooth lever.

Uses C2 / C8 / C33 / MACHZero control cables.
With the optional safety switch X12 (4620112) the engine can be started only with disengaged gearbox.

Cod.	Ref	UM	€
4601401	B85	PCS	

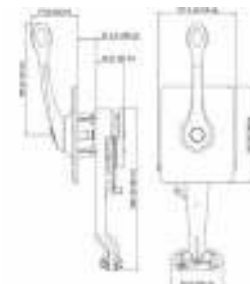
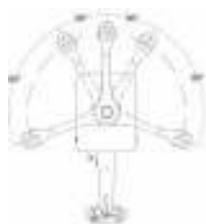


B400 S/Steel Single-Lever Control

Double action wall mount single lever S/Steel control for throttle and shift control for inboard engines. Perfect for sail boats thanks to the smooth lever.

Uses C2 / C8 / C33 / MACHZero control cables.
With the optional safety switch X41 (4620141) the engine can be started only with disengaged gearbox.

Cod.	Ref	UM	€
4601402	B400	PCS	

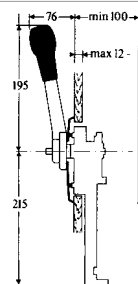


Teleflex 700SS Single-Lever Control

Double action wall mount single lever control for throttle and shift control for inboard engines. Standard equipped on Volvo and Vetus engines.

Uses C2 / C8 / C33 / MACHZero control cables.

Cod.	Ref	UM	€
4601404	700SS	PCS	



Vetus Sisco Single-Lever Control

Stainless Steel wall mount Vetus Sisco single lever control for throttle or shift control. With safety switch which prevents engine starting with engaged gearbox.

Cod.	Box Dim mm	Lever L mm	UM	€
4601406	122 x 142 x H85	200	PCS	



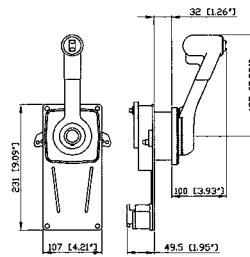
B184-Trim Single-Lever Control

Double action wall mount single lever control for throttle and shift control for inboard, outboard and stern drive engines.

Uses C2 / C8 / C33 / MACHZero control cables.
C5 cable can be connected with K35 kit (4620035).

With the optional safety switch X12 (4620112) the engine can be started only with disengaged gearbox.

Cod.	Ref	UM	€
4601301	B184-Trim	PCS	



B310B-Trim Single-Lever Control

Double action wall mount single lever control for throttle, shift and trim control for outboard engines and stern drives.

Uses C2 / C8 / C33 / MACHZero control cables.
C5 cable can be connected with K35 kit (4620035).

With the optional safety switch X12 (4620112) the engine can be started only with disengaged gearbox.

Cod.	Ref	UM	€
4601302	B310B-Trim	PCS	

